

SD ACADEMIA PRESENTS

6 TRENDING RAKHI DESIGNS
TO WATCH OUT FOR

RAKHI BANDHAN COURSE

Create **06**
Signature Rakhi
Hampers with SD

www.sdacademia.com

PERFECT FOR BEGINNERS &
HOME BUSINESSES.

MAY	10:30AM TO 12:30PM	3:00PM TO 5:00PM
19 TUE		
20 WED		RAKHI PACKAGING MASTERCLASS: by Ms. Priya
21 THUR		
22 FRI		
23 SAT		
24 SUN		

Note : There might be changes in the schedule due to emergencies or unforeseen circumstances.

MAY	10:30AM TO 12:30PM	3:00PM TO 5:00PM
26 TUE		
27 WED		SELL YOUR RAKHI – PRO COURSE : by : Mr. Sharad
28 THUR		
29 FRI		
30 SAT		
31 SUN		

Note : There might be changes in the schedule due to emergencies or unforeseen circumstances.

JUNE	10:30AM TO 12:30PM	3:00PM TO 5:00PM
02 TUE		
03 WED		
04 THUR		
05 FRI		
06 SAT		
07 SUN		

Note : There might be changes in the schedule due to emergencies or unforeseen circumstances.

/ SD ACADEMIA /

JUN	10:30AM TO 12:30PM	3:00PM TO 5:00PM
09 TUE		PEARL VATIKA BANDHAN SET DAY 1
10 WED		PEARL VATIKA BANDHAN SET DAY 2
11 THUR		PEARL VATIKA BANDHAN SET DAY 3
12 FRI		
13 SAT		
14 SUN		

Note : There might be changes in the schedule due to emergencies or unforeseen circumstances.

JUN	10:30AM TO 12:30PM	3:00PM TO 5:00PM
16 TUE		GULABI BANDHAN SET DAY 1
17 WED		
18 THUR		GULABI BANDHAN SET DAY 2
19 FRI		DESI GENDA BANDHAN SET DAY 1
20 SAT		
21 SUN		

Note : There might be changes in the schedule due to emergencies or unforeseen circumstances.

JUN	10:30AM TO 12:30PM	3:00PM TO 5:00PM
23 TUE		DESI GENDA BANDHAN SET DAY 2
24 WED		DESI GENDA BANDHAN SET DAY 3
25 THUR		
26 FRI		SHAHI MEHFIL BANDHAN SET DAY 1
27 SAT		
28 SUN		

Note : There might be changes in the schedule due to emergencies or unforeseen circumstances.



JUN	10:30AM TO 12:30PM	3:00PM TO 5:00PM
30 TUE		SHAHI MEHFIL BANDHAN SET DAY 2
JUL	10:30AM TO 12:30PM	3:00PM TO 5:00PM
01 WED		
02 THUR		
03 FRI		SHAHI MEHFIL BANDHAN SET DAY 3
04 SAT		
05 SUN		

JUL	10:30AM TO 12:30PM	3:00PM TO 5:00PM
07 TUE		SHAHI MEHFIL BANDHAN SET DAY 4
08 WED		SHAHI MEHFIL BANDHAN SET DAY 5
09 THUR		
10 FRI		SUNFLOWER GAJRA BANDHAN SET DAY 1
11 SAT		
12 SUN		

Note : There might be changes in the schedule due to emergencies or unforeseen circumstances.

/ SD ACADEMIA /

JUL	10:30AM TO 12:30PM	3:00PM TO 5:00PM
14 TUE		SUNFLOWER GAJRA BANDHAN SET DAY 2
15 WED		SUNFLOWER GAJRA BANDHAN SET DAY 3
16 THUR		KRISHAN LEELA BANDHAN SET DAY 1
17 FRI		KRISHAN LEELA BANDHAN SET DAY 2
18 SAT		
19 SUN		

Note : There might be changes in the schedule due to emergencies or unforeseen circumstances.

/ SD ACADEMIA /

JUL	10:30AM TO 12:30PM	3:00PM TO 5:00PM
21 TUE		KRISHAN LEELA BANDHAN SET DAY 3
22 WED		KRISHAN LEELA BANDHAN SET DAY 4
23 THUR		
24 FRI		
25 SAT		
26 SUN		

Note : There might be changes in the schedule due to emergencies or unforeseen circumstances.

/ SD ACADEMIA /

TABLE OF CONTENTS

- 01 *Pearl Vatika Bandhan Set*
Garima
- 02 *Gulabi Bandhan Set*
Tarun
- 03 *Desi Genda Bandhan Set*
Anamika
- 04 *Shahi Mehfil Bandhan Set*
Priya
- 05 *Sunflower Gajra Bandhan Set*
Moumita
- 06 *Krishan Leela Bandhan Set*
Moumita

PEARL VATIKA

BANDHAN SET WORKSHOP | RAKHI 2026 EDITION

CREATE ELEGANT
RAKHI DECOR WITH A
FESTIVE TOUCH

2026

Turn Your
Creativity into a
Festive Business
Opportunity



0:35545 62336 78 1

www.sdacademia.com

RAKHI 2026 COLLECTION

THE RAKHI EDIT

RESIN RAKHI &
HANDCRAFTED
ELEGANCE

The Festive Rakhi Collection

3
CREATIVE
SESSIONS
IN ONE WORKSHOP

WWW.SDACADEMIA.COM

FIRST EDITION

JUNE 2026

Pearl Vatika

A CELEBRATION OF HANDMADE
BONDS

**Craft Your Own
Elegant Rakhi
Keepsake**

**Experience the art of
creating a luxurious Pearl
Vatika Bandhan Set —**

A BLEND OF DELICATE FLORALS, PEARLS,
AND HANDCRAFTED ELEGANCE DESIGNED TO
MAKE YOUR RAKHI TRULY SPECIAL.

Evil Eye Rakhi

Made with an evil eye charm, resin floral elements, and pearl detailing,
Paired with a resin and pearl thali base for arranging and presenting the rakhi.



PEARL VATEKA BANDHAN SET

Evil Eye Rakhi -

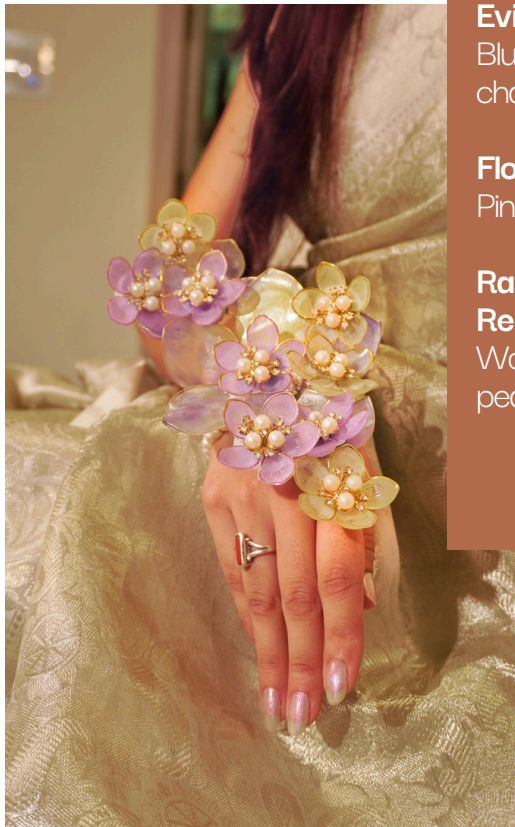
Blue thread with protective evil eye charm

Floral Bhabhi Rakhi -

Pink resin florals with pearl detailing

Rakhi Thali Base - Pink & Pearl Resin Setup -

Wooden base with pink resin & pearls for display



Floral Bhabhi Rakhi

Made with resin floral elements and pearl detailing in soft pastel tones, designed as a bracelet-style rakhi for your bhabhi.

Rakhi Thali Base - Pink & Pearl Resin Setup

Crafted using wooden base, pink resin florals, and pearl detailing,

This rakhi thali is designed to neatly hold and highlight your rakhi set.

A perfect combination of soft pink tones + pearl accents,

making your festive setup look complete and presentation-ready.

Pearl Vatika Bandhan Set

HANDCRAFTED RAKHI COLLECTION

CREATE • CUSTOMIZE •
CELEBRATE

LIMITED SEATS



JUNE 2026
WORKSHOP EDITION



JUNE 2026

WORKSHOP VOL. 02

GULABI BANDHAN

RAKHI CRAFT
EDITION

+

Celebrate with Elegant Rakhi Set

ART

02
CREATE & SELL
YOUR OWN SETS

A festive blend of resin art, pearls, and soft hues —
designed for celebration and perfect for
starting your own rakhi creations.



WWW.SDACADEMIA.COM

Rakhi Collection

Workshop Edition 2026

Rakhi Utsav

Celebrate Bonds, Create Your Style

Festive Creations
Handcrafted Elegance

Weekday Batches
Limited Seats

Creative Skills
Business
Opportunity

Batch 02

June 2026

Evil Eye Rakhi

Designed with a protective evil eye charm on a soft thread base, Accented with pink resin florals and subtle pearl detailing for a balanced festive look.



GULABI BANDHAN SET

Bhai Rakhi – evil eye with pink resin floral detailing

Bhabhi Rakhi – gold bracelet style with soft pink resin florals

Rakhi Thali Base – layered pink resin petals, perfect for showcasing your rakhi



Bhabhi Rakhi

A stylish bracelet-style rakhi featuring a gold-toned ring design, paired with soft pink resin florals for a modern and elegant festive look.

Rakhi Thali Base – Metal & Mirror Finish

Crafted with a golden metal base and mirror detailing, Enhanced with pink resin floral layers for a clean festive presentation.

Gulabi Edit

RESIN RAKHI COLLECTION

CRAFTED WITH
DETAIL. DESIGNED
TO CELEBRATE.

CREATE • STYLE • SELL



RAKHI 2026
WORKSHOP BATCH 02



RAKSHA BANDHAN EDIT

JUNE SPECIAL

RAKHI

HANDCRAFTED
FESTIVE
WORKSHOP

Desi Genda Bandhan Set

Celebrate the bond of love with
handcrafted rakhi designs.
Learn floral techniques, festive styling,
and create your own unique bandhan set.



WWW.SDACADEMIA.COM

Classic Thread Bhai Rakhi

Made with a simple thread base and gold bead detailing,
Creating a clean, traditional rakhi suitable for everyday festive wear.

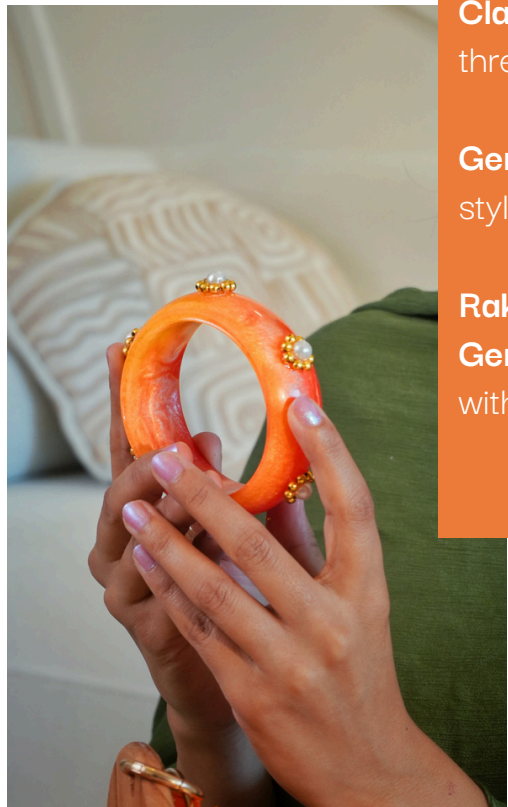
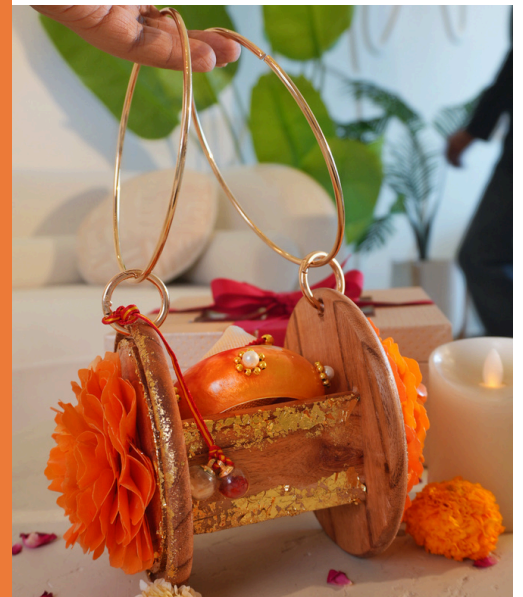


DESI GENDA BANDHAN SET

Classic Thread Rakhi - Simple thread with gold bead detailing

Genda Bangle Rakhi - Bangle-style design with genda accents

Rakhi Thali Base - Wooden Genda Setup - Wooden base with festive genda florals



Bangle Style Bhabhi Rakhi

Made with a solid bangle base and gold bead accents,
creating a bold festive rakhi with a clean, structured look.

Rakhi Thali Base - Hanging Wooden Setup
Made with a wooden frame and metal handle,
Decorated with genda florals and festive elements
for a complete rakhi display.

Workshop Dates: 19, 23, 24 June

BANDHAN

STYLE OF CELEBRATION

01

**FESTIVE
DROP
2026**



Crafted with intention, inspired by tradition.

Bandhan Edit

THE ART OF FESTIVE CRAFT

DESI GENDA COLLECTION
2026

CRAFTED WITH
DETAIL. DESIGNED
TO CELEBRATE.



JUNE 2026 / FESTIVE
SPECIAL EDITION



SHAHI MEHFIL



SIGNATURE
WORKSHOP

04

A ROYAL
FESTIVE
CREATION



THE ESSENCE OF FESTIVE ELEGANCE

5
SESSIONS
SHAHI
MEHFIL
BANDHAN
SET

BEGINNER FRIENDLY
LIMITED SEATS
26, 30 JUNE | 3, 7, 8 JULY
WORKSHOP EDITION 2026

Rakhi Collection

Workshop Edition 2026

Shahi Mehfil

Create ▪ Celebrate ▪ Elevate Your Craft



5 Session Series

Beginner Friendly

Limited Seats
Hands-on
Learning

Festive Creations
Business
Opportunity

26, 30 June | 3, 7, 8 July

Evil Eye Protection Rakhi

Blue thread design with a protective evil eye charm, a simple and meaningful piece symbolizing positivity and protection.



SHAHI MEHFIL BANDHAN SET

Evil Eye Rakhi - Blue thread with evil eye charm

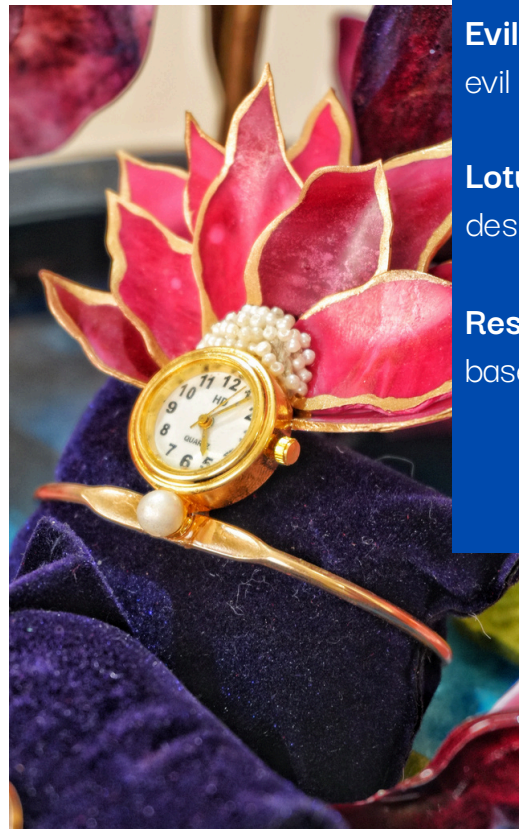
Lotus Bracelet Rakhi - Lotus design with metal bangle finish

Resin Floral Thali Base - Round base with multi-color resin florals



Resin Floral Rakhi Thali Base

Designed with a round base and layered resin florals, Featuring pink, purple, and blue tones with detailed elements for a complete festive setup.



Lotus Dial Bracelet Rakhi

Designed with a gold-toned metal bangle base, Featuring a pink lotus resin design with a watch dial detail and pearl accents for a rich festive finish.

Shahi Edit

FESTIVE RAKHI COLLECTION

RAKHI 2026
PREMIUM EDITION

CREATE • STYLE •
SELL



LIMITED SEATS
PERFECT FOR BEGINNERS



SUNFLOWER GAJRA BANDHAN SET

SUNFLOWER
BANDHAN

JULY 2026 / FESTIVE
EDITION



JULY 2026

VOL. 01

The Festive Sunflower Gajra Bandhan Set

01

PREMIUM
LAUNCH OF
THIS YEAR



WWW.SDACADEMIA.COM



0 6 5 1 2 9 4 3 7 8 0 2 4 3



**RAKHI
WORKSHOP**

FESTIVE MAGAZINE

Edition Info

July 2026 | Rakhi Special Issue

Sunflower Thread Rakhi

Multicolor zig-zag thread with bead accents, inspired by sunflower tones and traditional gajra style



SUNFLOWER GAJRA BANDHAN SET

Sunflower Thread Rakhi - Multicolor zig-zag thread with bead accents

Sunflower Bhabhi Rakhi - Sunflower motif with gajra-style latkan

Gajra Rakhi Base - Wooden base with crochet gajra detailing



Sunflower Gajra Rakhi Base

Handcrafted crochet gajra florals with thread latkan detailing, combined with a wooden base for a fresh, festive arrangement



Bhabhi Sunflower Gajra Bhabhi Rakhi

Handcrafted multicolor zig-zag thread using crochet technique, finished with bead detailing and sunflower-inspired tones for a traditional festive look

Workshop Dates: 10, 14 & 15 July

FESTIVE COLLECTION

THREADWORK • TEXTURE • STYLING

SUNFLOWER GAJRA
BANDHAN SET

A HANDCRAFTED
STATEMENT
DESIGNED TO LOOK
PREMIUM.



JULY 2026 /
FESTIVE EDITION



JULY 2026

VOL. 01

BANDHAN

FESTIVE ART
RAKHI
MAGAZINE

01

BEST RAKHI
DESIGNS OF
THE YEAR

Inspired by the joy and colors of Krishna Leela, this Rakhi set brings storytelling into handcrafted design.



WWW.SDACADEMIA.COM

FESTIVE

VOL. 01 | SD ACADEMIA | FESTIVE ISSUE

MASTERING THE ART OF FESTIVE CREATIVITY

Strategies to create
premium Rakhi
designs
and turn your creativity
into income

2026



0 35545 62336 78 1

www.sdacademia.com

Krishna Crochet Rakhi

Handcrafted crochet rakhi using soft yarn, inspired by Krishna Leela theme, with neat stitching and playful detailing for a devotional festive touch

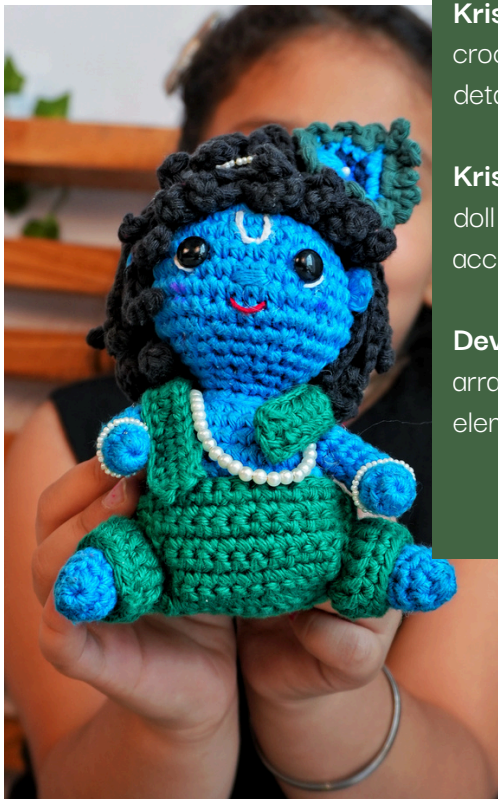


KRISHAN LEELA BANDHAN SET

Krishna Crochet Rakhi - Handmade crochet rakhi with blue-green yarn detailing

Krishna Amigurumi Doll - Soft yarn doll with detailed stitching and bead accents

Devotional Rakhi Setup - Simple base arranged with Krishna-themed elements for festive display



Krishna Amigurumi Doll

Handcrafted crochet doll using soft yarn and amigurumi technique, detailed with beads and stitching to create a playful, devotional festive element

Krishna Theme Rakhi Set

Handcrafted crochet rakhi with an amigurumi Krishna doll, created using soft yarn and detailed stitching, arranged on a simple base for a devotional festive setup

Krishnan Leela

BANDHAN SET

WHERE HANDCRAFTED DETAILS
MEET PLAYFUL FESTIVE
EXPRESSION.

A JOYFUL BLEND OF
CROCHET ART AND
FESTIVE STORYTELLING.



JULY 2026 /
FESTIVE EDITION



DREAM TEAM BEHIND

Editor-in-Chief :

Ms. Ridhima Garg ,

Ms. Neha Verma

Ms. Mitali

Creative Director :

Mr. Sharad Dabra

Photography:

Mr. Vikas

Mr. Gaurav

Visual Editor :

Mr. Vikas

Mr. Gaurav

Digital Presence & Web Design:

Mr. Mohit Thareja

Logistics :

Mr. Akshit Thakur and

Ms. Shreshta Arya

We sincerely thank each contributor for their exceptional talent and dedication.

Choose your favourite workshop and enroll now

Workshops :
www.sdacademia.com

Material :
www.sdfinearts.com